

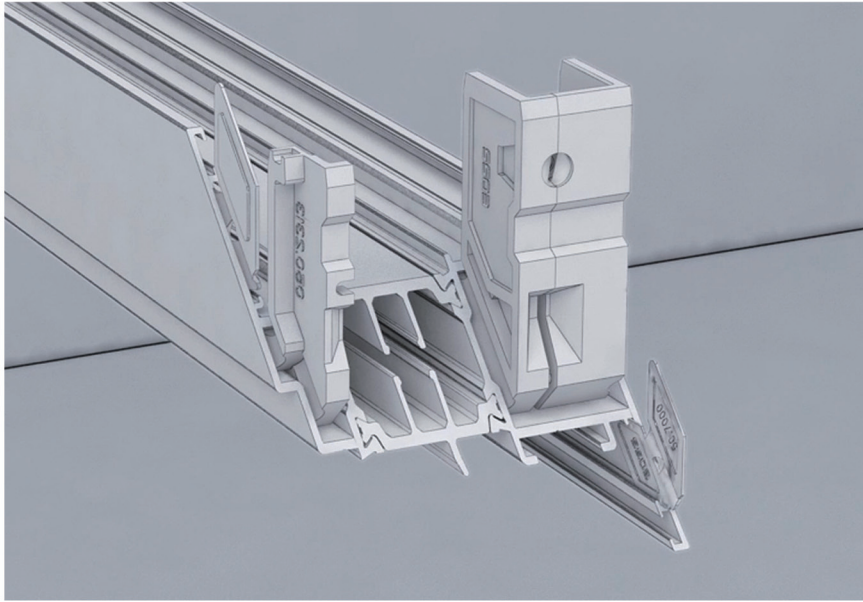


Proprietary technology, independent research and development, with independent intellectual property rights

Systematic, standardized, Informational and highly integrated one-stop procurement service

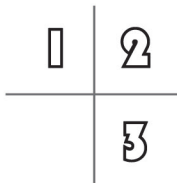
System of technology research and development, material supply, testing and evaluation, software support, tooling equipment, technical support, etc.

It has significant energy saving and environmental protection, and appoints diversified solutions for different climate and regional characteristics



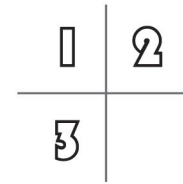
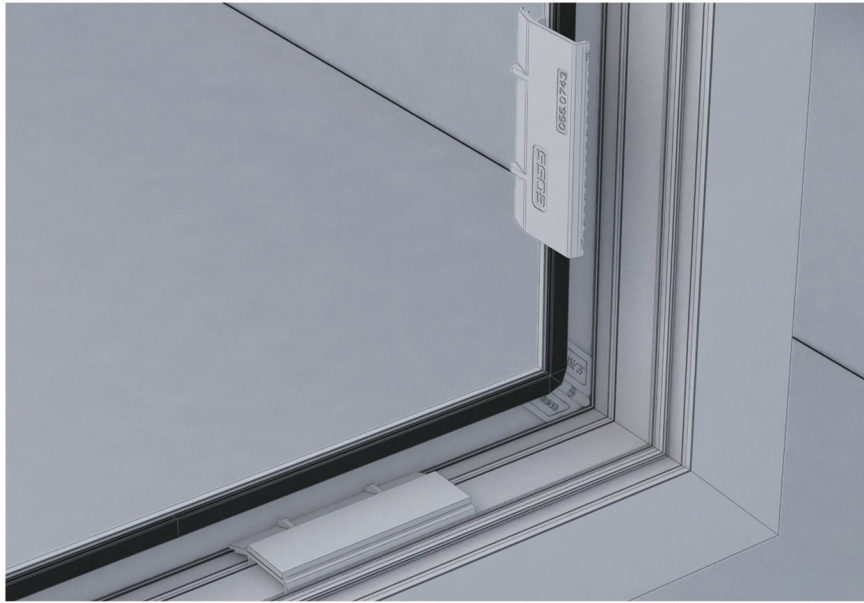
Corner Craft

With the patented die-casting corner design, the ring-shaped glue injection process, it has greatly enhanced the strength of the connection and the air-tight and water-tight performance.



- Mullion Connector
- ⌚ Mullion Locking Connector
- ⌚ Middle stiletto locking corner





- Glass holder
- ⌒ European standard notch
- ⌒ Rubber strip and rubber corner

Hardware and accessories

The use of arch bridge glass holder, Ensure smooth drainage;
 European standard notch design, strong hardware matching;
 Rubber strip and rubber corner can make sure Air tightness and water tightness performance

Casement systems

Common thermal break casement system

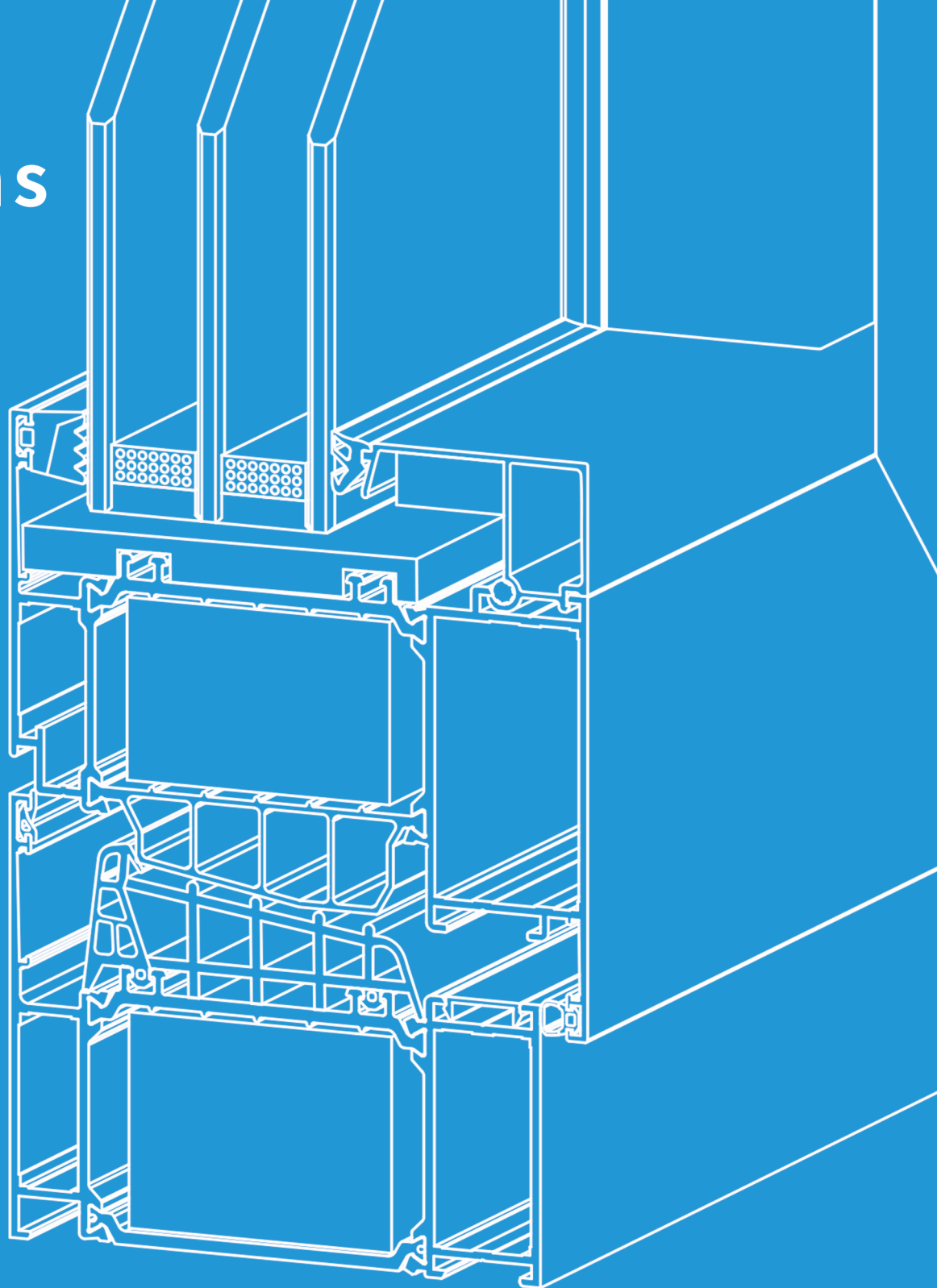
ES 52	-----	06
ES 57	-----	07
ES 61	-----	08
ES 65	-----	09

High performance thermal break casement system

ES 70	-----	10
ES70A	-----	11
ES 71	-----	12
ES 76	-----	13
ES 78	-----	14
ES 81	-----	15

Passive casement system

ES 91	-----	16
ES101	-----	17
ES110	-----	18





ES52 casement window



Thermal Insulation performance
Level 6



Sound Insulation performance
Level 3



Water Tightness performance
Level 6



Air Tightness performance
Level 8



Wind Resistance performance
Level 9

Frame Depth:52mm , Heat Insulation Strips:15mm

Sash Depth:61mm ,Heat Insulation Strips:15mm

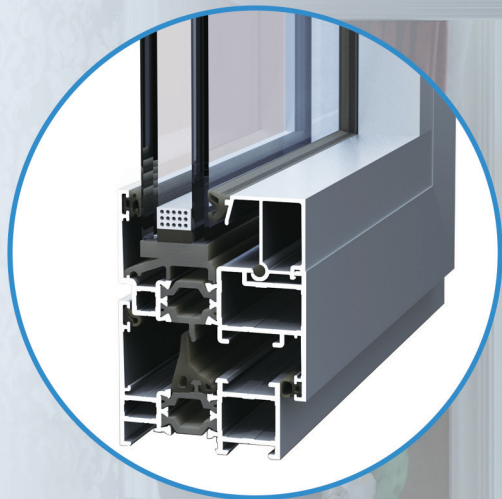
Can install Fly screen,Beautiful design

Water gas separation, isobaric principle design

European standard notch design, strong hardware matching;

Take Three channel seal design, excellent sealing performance;

Can make inward and outward two different opened window style



ES57 casement window



Thermal Insulation performance
Level 6



Sound Insulation performance
Level 3



Water Tightness performance
Level 6



Air Tightness performance
Level 8



Wind Resistance performance
Level 9

Frame Depth:57mm , Heat Insulation Strips:20mm

Sash Depth:66mm ,Heat Insulation Strips:20mm

Can install Fly screen,Beautiful design

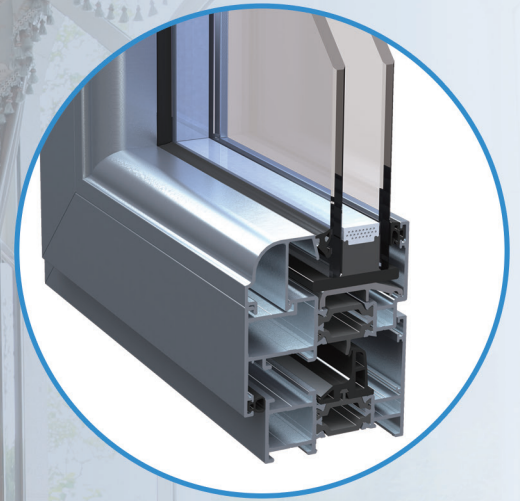
Water gas separation, isobaric principle design

European standard notch design, strong hardware matching;

Take Three channel seal design, excellent sealing performance;

Can make inward and outward two different opened window style





ES61 casement window



Thermal Insulation performance
Level 7



Sound Insulation performance
Level 3



Water Tightness performance
Level 6



Air Tightness performance
Level 8



Wind Resistance performance
Level 9

Frame Depth:61mm , Heat Insulation Strips:24mm

Sash Depth:70mm ,Heat Insulation Strips:24mm

Can install Fly screen,Beautiful design

Water gas separation, isobaric principle design

European standard notch design, strong hardware matching;

Take Three channel seal design, excellent sealing performance;

Can make inward and outward two different opened window style



ES65 casement window



Thermal Insulation performance
Level 7



Sound Insulation performance
Level 3



Water Tightness performance
Level 6



Air Tightness performance
Level 8



Wind Resistance performance
Level 9

Frame Depth:65mm , Heat Insulation Strips:28mm

Sash Depth:74mm ,Heat Insulation Strips:28mm

Can install Fly screen,Beautiful design

Water gas separation, isobaric principle design

European standard notch design, strong hardware matching;

Take Three channel seal design, excellent sealing performance;

Can make inward and outward two different opened window style



ES70 casement window



Thermal Insulation performance
Level 8



Sound Insulation performance
Level 3



Water Tightness performance
Level 6



Air Tightness performance
Level 8



Wind Resistance performance
Level 9

Frame depth: 70 mm, Heat insulation strips: 33 mm

Sash depth: 79 mm, Heat insulation strips: 33 mm

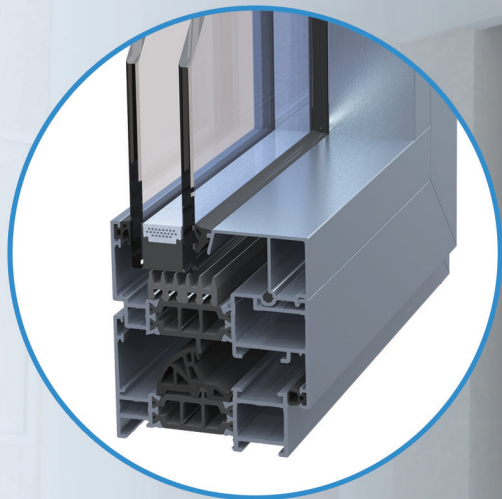
Can be equipped with screen window, elegant appearance,

Water-gas separation, isobaric principle design.

European standard notch design, suitable for a variety of hardware.

Three-layers sealing design, excellent sealing performance.

Provide different type window with inward open and outward open.



ES70A casement window



Thermal Insulation performance
Level 8



Sound Insulation performance
Level 4



Water Tightness performance
Level 6



Air Tightness performance
Level 8



Wind Resistance performance
Level 9

Frame depth: 70 mm, Heat insulation strips: 33 mm

Sash depth: 79 mm, Heat insulation strips: 33 mm

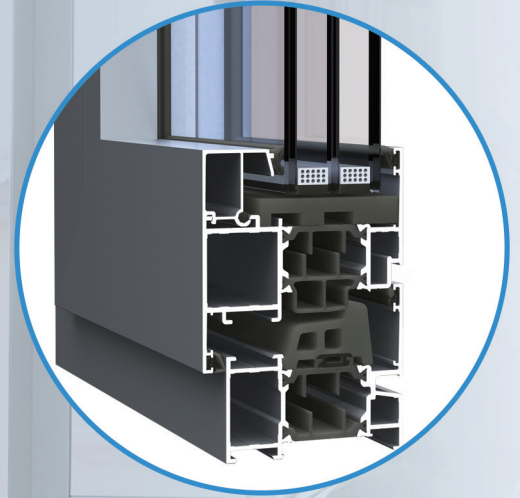
Can be equipped with screen window, elegant appearance,

Water-gas separation, isobaric principle design.

European standard notch design, suitable for a variety of hardware.

Three-layers sealing design, excellent sealing performance.

Select arched heat insulation strips, ensure better thermal insulation performance.



ES71 Inward open casement window



Thermal Insulation performance
Level 8



Sound Insulation performance
Level 4



Water Tightness performance
Level 6



Air Tightness performance
Level 8



Wind Resistance performance
Level 9

Frame depth: 71 mm, Heat insulation strips: 34 mm

Sash depth: 80 mm, Heat insulation strips: 34 mm

Can be equipped with screen window, elegant appearance,
Water-gas separation, isobaric principle design.

European standard notch design, suitable for a variety of hardware.

Three-layers sealing design, excellent sealing performance.

Select arched heat insulation strips, ensure better thermal
insulation performance.



ES76 Inward open casement window



Thermal Insulation performance
Level 10



Sound Insulation performance
Level 4



Water Tightness performance
Level 6



Air Tightness performance
Level 8



Wind Resistance performance
Level 9

Frame depth: 76 mm, Heat insulation strips: 39 mm

Sash depth: 85 mm, Heat insulation strips: 39 mm

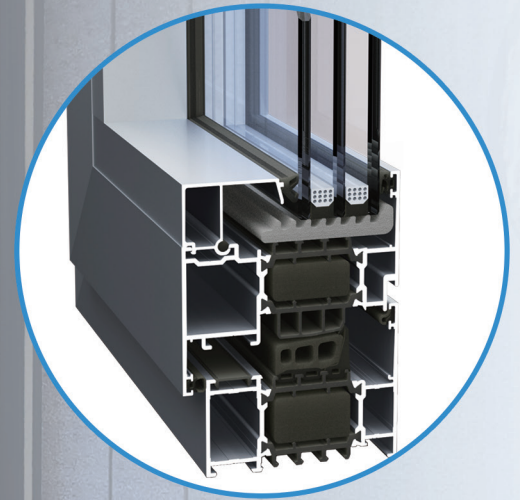
Can be equipped with screen window, elegant appearance.

Cavity filled foam, ensure perfect thermal insulation.

European standard notch design, suitable for a variety of hardware.

Three-layers sealing design, excellent sealing performance.

Select arched heat insulation strips, ensure better thermal insulation performance.



ES78 Inward open casement window



Thermal Insulation performance
Level 10



Sound Insulation performance
Level 4



Water Tightness performance
Level 6



Air Tightness performance
Level 8



Wind Resistance performance
Level 9

Frame depth: 78 mm, Heat insulation strips: 41 mm

Sash depth: 87 mm, Heat insulation strips: 41 mm

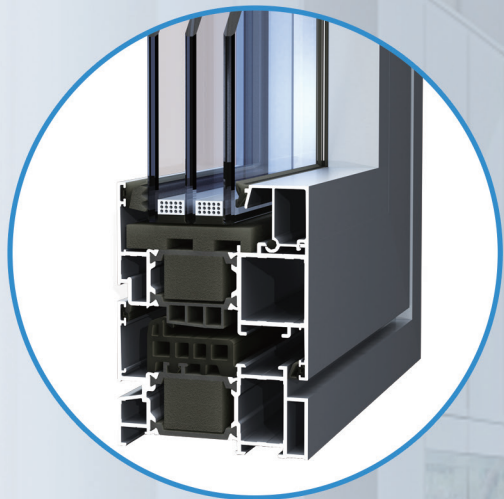
Cavity filled foam, ensure perfect thermal insulation.

European standard notch design, suitable for a variety of hardware.

Three-layers sealing design, excellent sealing performance.

Select arched heat insulation strips, ensure better thermal insulation performance.

Can be equipped with screen window, elegant appearance, provide option hidden drainage window



ES81 Inward open casement window



Thermal Insulation performance
Level 10



Sound Insulation performance
Level 4



Water Tightness performance
Level 6



Air Tightness performance
Level 8



Wind Resistance performance
Level 9

Frame depth: 81 mm, Heat insulation strips: 44 mm

Sash depth: 90 mm, Heat insulation strips: 44 mm

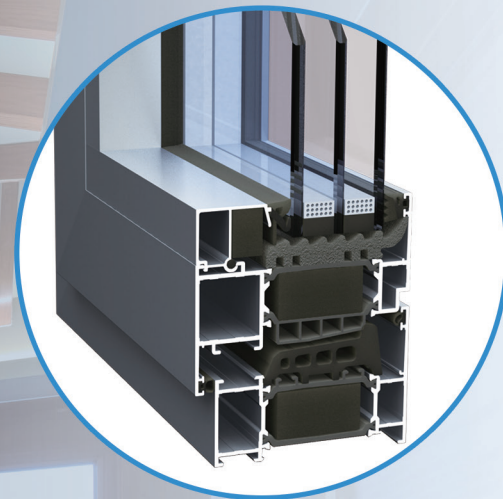
Can be equipped with screen window, elegant appearance.

Cavity filled foam, ensure perfect thermal insulation.

European standard notch design, suitable for a variety of hardware.

Three-layers sealing design, excellent sealing performance.

Select arched heat insulation strips, ensure better thermal insulation performance.



ES91 Passive House Window



Thermal Insulation performance
Level 10



Sound Insulation performance
Level 4



Water Tightness performance
Level 6



Air Tightness performance
Level 8



Wind Resistance performance
Level 9

Frame Depth: 91 mm, Heat insulation strips: 54 mm

Sash thickness: 100 mm, Heat insulation strips: 54 mm

Can be equipped with screen window, elegant appearance,

Filled in the chambers with foam, excel in heat insulation

European standard slot design, suitable for a variety of hardware

Three-layers sealing design, excellent sealing performance.

Certified by German PHI $U_w \leq 1.00W/(m^2k)$



ES101 Open-inside passive window

-  Thermal Insulation performance **Level 10**
-  Sound Insulation performance **Level 4**
-  Water Tightness performance **Level 6**
-  Air Tightness performance **Level 8**
-  Wind Resistance performance **Level 9**

Frame depth: 101 mm, Heat insulation strips: 64 mm

Sash depth: 110 mm, Heat insulation strips: 64 mm

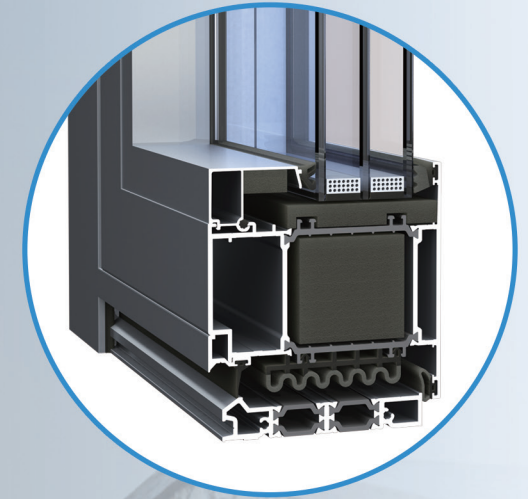
Can be equipped with screen window, elegant appearance,

Filled in the chambers with foam, excel in heat insulation

European standard slot design, suitable for a variety of hardware

Three-layers sealing design, excellent sealing performance.

Certified by German PHI $U_w \leq 1.00W/(m^2k)$



ES110 Passive Door



Thermal Insulation performance
Level 10



Sound Insulation performance
Level 4



Water Tightness performance
Level 6



Air Tightness performance
Level 8



Wind Resistance performance
Level 9

Frame depth: 110 mm, Heat insulation strips: 64 mm

Sash depth: 110 mm, Heat insulation strips: 64 mm

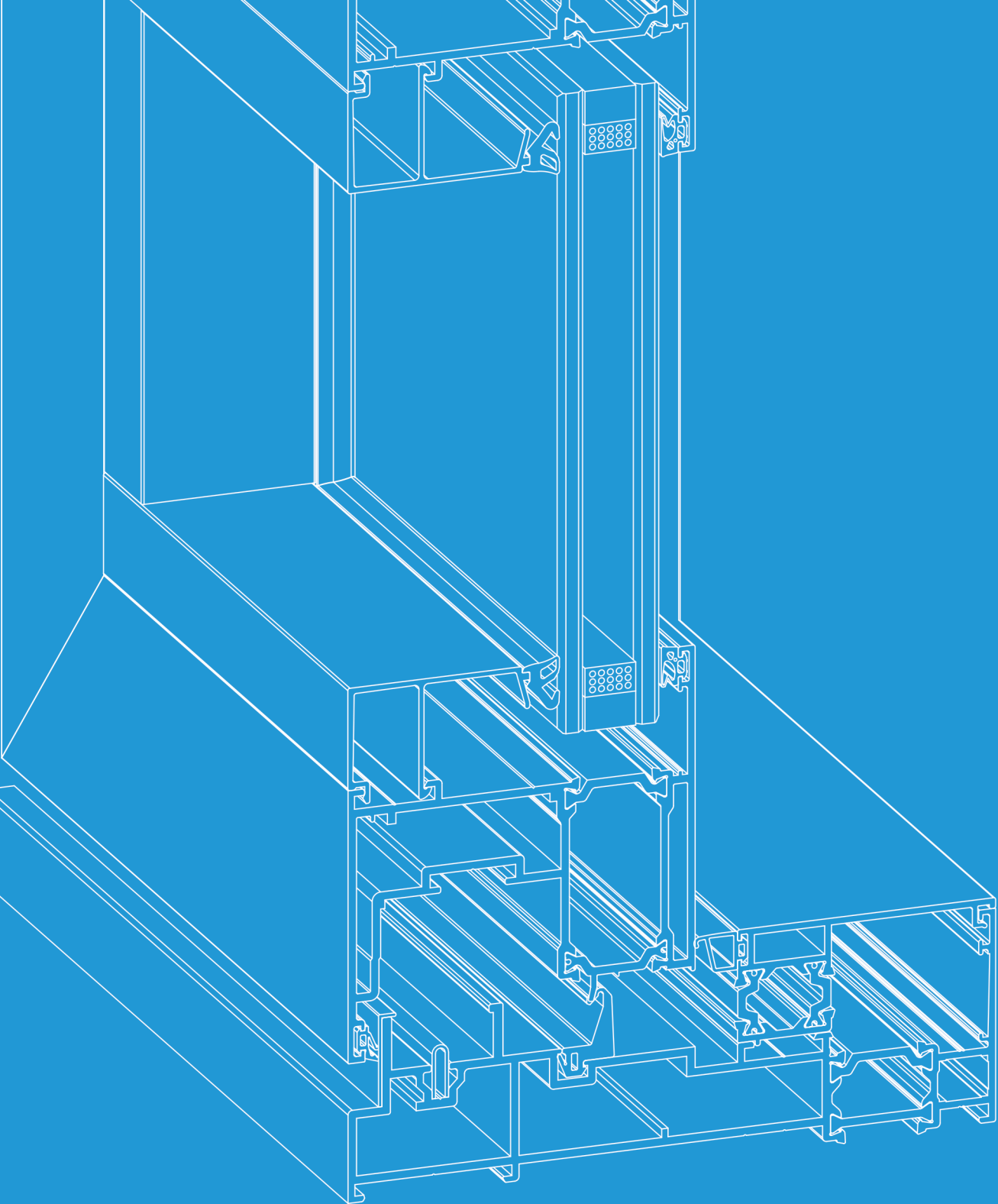
Can be equipped with screen window, elegant appearance,

Filled in the chambers with foam, excel in heat insulation

European standard slot design, suitable for a variety of hardware

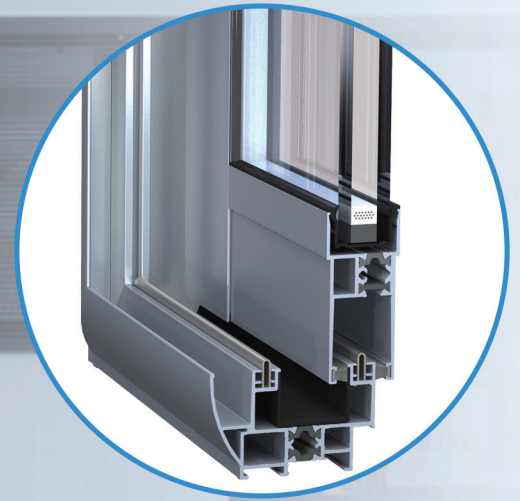
Three-layers sealing design, excellent sealing performance.

Certified by German PHI $U_w \leq 1.00W/(m^2k)$



Sliding series

ES 86	-----	20
ES 115	-----	21
ES 116	-----	22
ES 144	-----	23
ES 152	-----	24
ES 153	-----	25



ES86 Sliding Door



Thermal Insulation performance
Level 5



Sound Insulation performance
Level 2



Water Tightness performance
Level 3

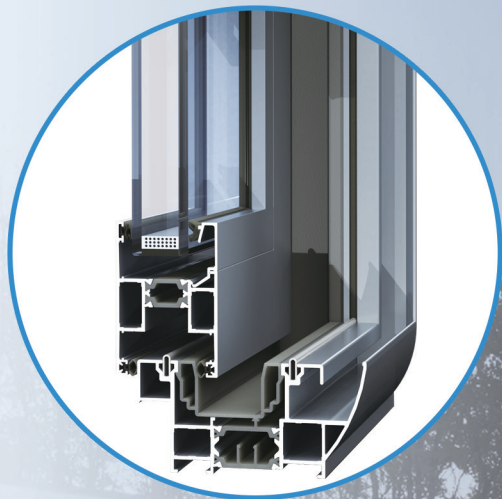


Air Tightness performance
Level 8



Wind Resistance performance
Level 9

Frame depth: 86 mm, Heat insulation strips: 15 mm
Sash depth: 34 mm, Heat insulation strips: 15/30 mm
Slim-frame Design, thin linellae
Hidden drainage, elegant appearance
Casted corner joint, patent design
EPDM rubber, better performance
Unique drainage design, excellent water tightness
The integration of Sun-shade and Screen window,
functional diversification



ES115 Sliding window



Thermal Insulation performance
Level 7



Sound Insulation performance
Level 2



Water Tightness performance
Level 4



Air Tightness performance
Level 6



Wind Resistance performance
Level 9

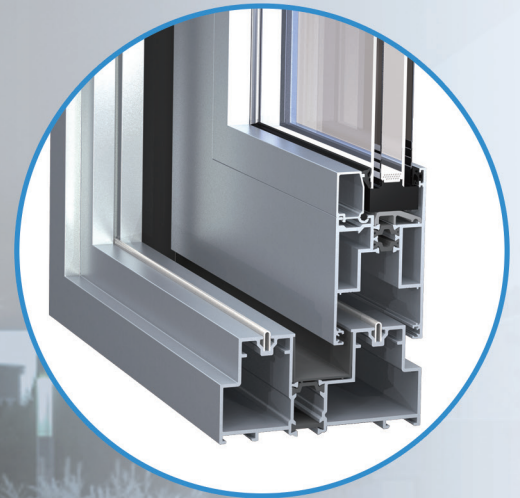
Frame depth: 115.6 mm, Heat insulation strips: 33 mm

Sash depth: 52 mm, Heat insulation strips: 22 mm

EPDM rubber, better performance

Unique drainage design, excellent water tightness

Three-layers sealing design, excellent sealing performance.



ES116 Sliding Door



Thermal Insulation performance
Level 5



Sound Insulation performance
Level 3



Water Tightness performance
Level 3



Air Tightness performance
Level 5



Wind Resistance performance
Level 9

Side Frame Depth:116mm

Heat Insulation Strips:18.6mm

Glass bead inside,make the window safe and sound,
European standard notch design,Hardware with strong compatibility,
Multi - channel sealing design, making sealing perfect.



ES144 lift and sliding door



Thermal Insulation performance
Level 6



Sound Insulation performance
Level 3



Water Tightness performance
Level 3



Air Tightness performance
Level 6



Wind Resistance performance
Level 9

Side Frame Depth:144mm;Heat Insulation Strips:24mm

Sashe Depth:61.2mm;Heat Insulation Strips:24mm

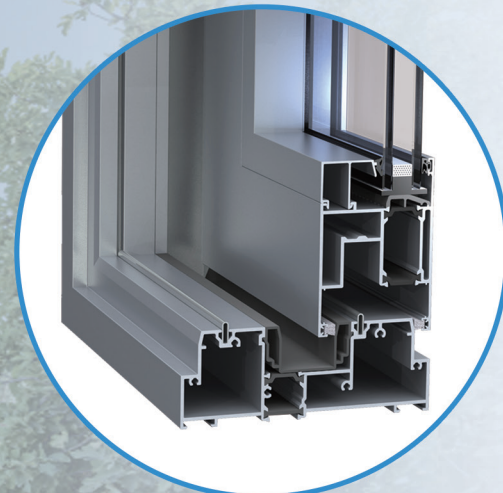
European standard notch design,Hardware with strong compatibility,

Low track design, barrier-free access






Multi - channel sealing design, making sealing perfect.

It is better than the common sliding doors in the aspects of Air permeability,Water tightness,and

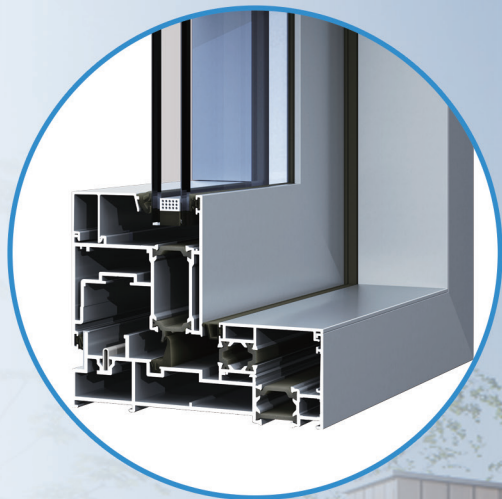
Wind resistance; the special hard ware can make the sash stopped at any place.



ES152 lift and sliding door

-  Thermal Insulation performance **Level 7**
-  Sound Insulation performance **Level 3**
-  Water Tightness performance **Level 4**
-  Air Tightness performance **Level 8**
-  Wind Resistance performance **Level 9**

Side Frame Depth:152mm;Heat Insulation Strips:24mm
Sash Depth:70mm;Heat Insulation Strips:24mm
The sash can bear more than 300kg;
Heat insulation hook design making the Heat preservation better,
It has single, double and triple tracks to choose;
It adopt the system producing process and Dedicated hardware,
making the connection strong and performance perfect.



ES153 Adjustable sliding door



Thermal Insulation performance
Level 7



Sound Insulation performance
Level 3



Water Tightness performance
Level 6



Air Tightness performance
Level 7



Wind Resistance performance
Level 9

Side Frame Depth:153mm ;Heat Insulation Strips:24mm

Sash Depth:82mm ;Heat Insulation Strips:24mm

Isobaric principle design, water and air separated;

Track inside,Bottom bearing structure,No outside falling risk, making it safe.

Three channel sealing,reaching good Air permeability,Water tightness and blocking the sand and dust ;

Adjustable sliding design making Water tightness perfect, ,and with the adjustable hardware making the sash stopped at any where.

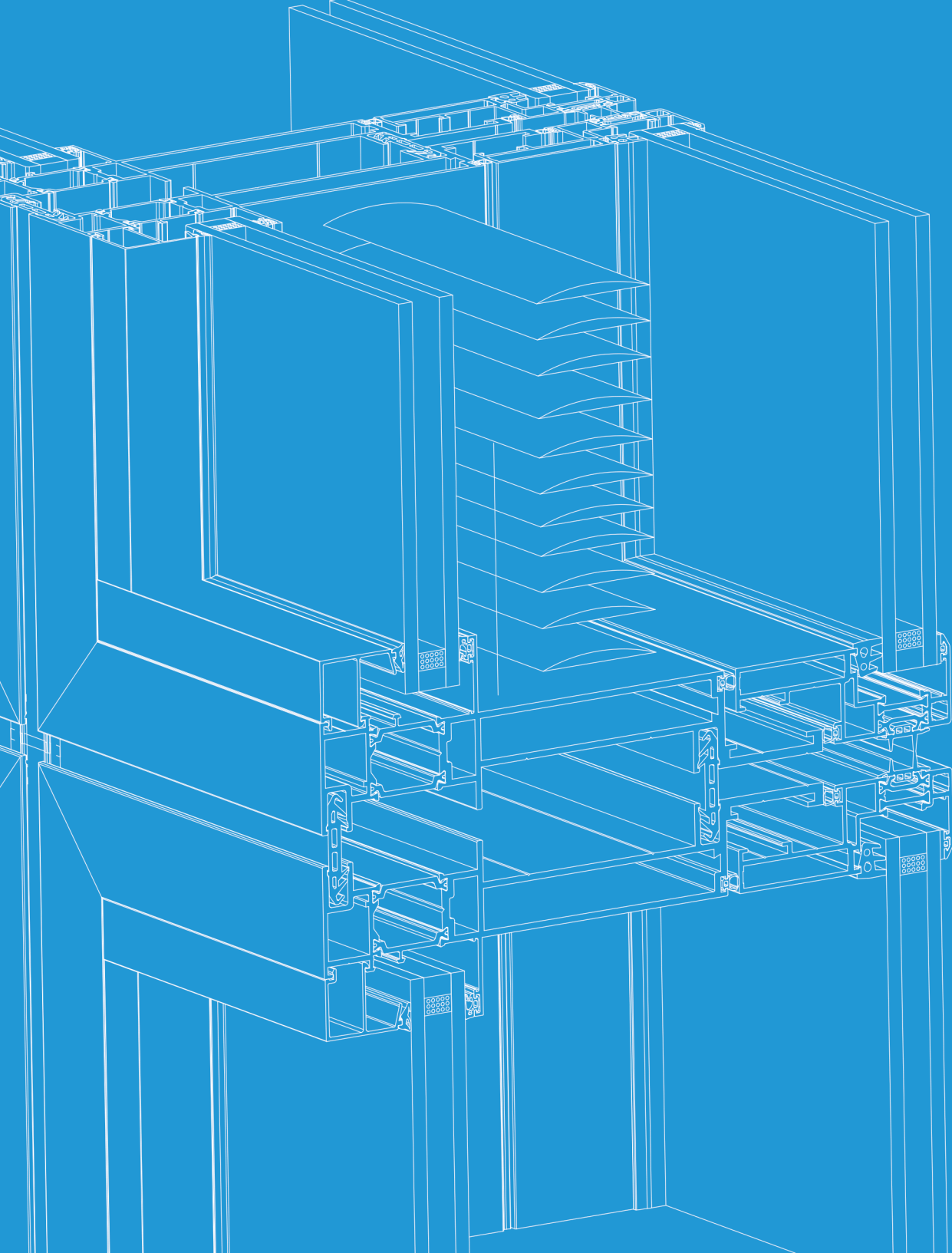
The sash can bear more than 300kg;

Heat insulation hook design making the Heat preservation better,

It has single, double and triple tracks to choose;

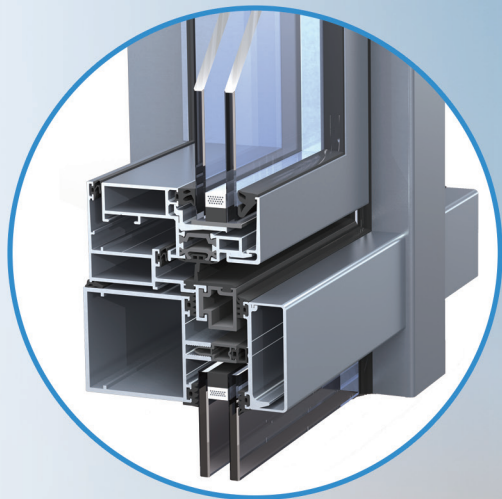
It adopt the system producing process and Dedicated hardware,making the connection strong and performance perfect.





Curtain wall series

EF 60	-----	27
EF60HI	-----	28
EF 87	-----	29
EF100	-----	30
EF120	-----	31



EF60 Thermal Break Facade



Thermal Insulation performance
Level 6



Sound Insulation performance
Level 3



Water Tightness performance
Level 5



Air Tightness performance
Level 4



Wind Resistance performance
Level 9

Beam Depth:95mm

Pillar thickness 120mm

Perfect water drainage design making perfect water tightness,

Thorough heat insulation structures making Heat preservation better,

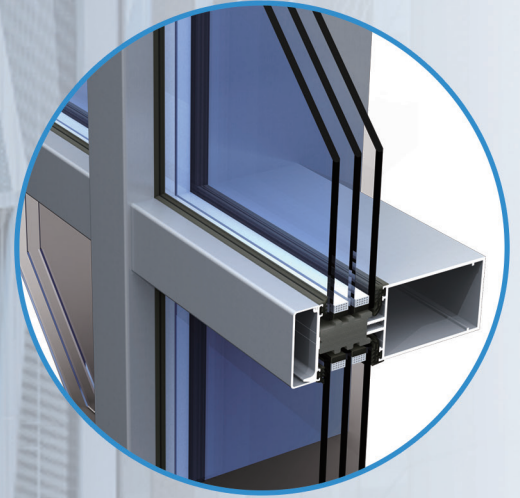
Reducing energy consumption;

Unique thermal break windows design improving the Heat preservation;

Dry construction is adopted, the beam and pillar adopted the structure sealing,

making the installation easy and not influenced by weather for no silicone is

needed at working site.



EF60HI High Thermal Break Facade

-  Thermal Insulation performance **Level 8**
-  Sound Insulation performance **Level 3**
-  Water Tightness performance **Level 5**
-  Air Tightness performance **Level 4**
-  Wind Resistance performance **Level 9**

Horizontal Frame Depth: 95 mm;

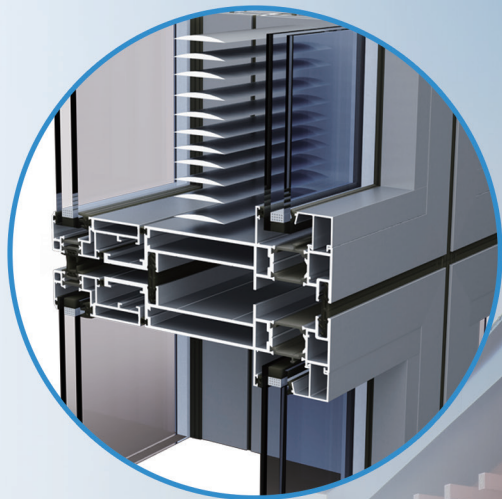
Vertical Frame Depth: 150 mm;

Pass the PHI certification of Germany, $UW \leq 0.8W/(m^2 \cdot K)$;

The cavity is filled with insulation foam to improve the effective insulation performance and reduce energy consumption;

Unique visible frame thermal break window design, it reduce the cold-bridge phenomena, improving the insulation performance;

Dry construction is adopted, Horizontal and Vertical Frame adopt the structural seal, no need to fill with sealant on site, it will be convenient construction, not affected by weather or climate.



EF87 Double Facades



Thermal Insulation performance
Level 7



Sound Insulation performance
Level 4



Water Tightness performance
Level 5



Air Tightness performance
Level 4



Wind Resistance performance
Level 9

Curtain Wall Frame Depth: 222 mm, Heat insulation strips: 33 mm

Curtain Wall Sash Depth: 95 mm, Heat insulation strips: 22 mm

Unit plate splicing shortens the construction period;

Higher heat exchange rate makes the better thermal performance while filtering and purifying air;

Unique ventilation structure design and no chimney effect reduces the difficulty of fire prevention;

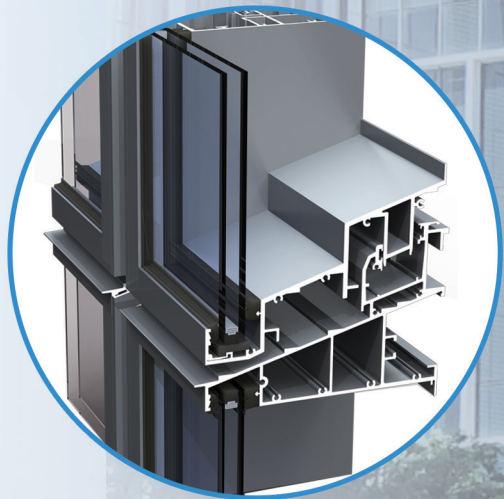
Integrated electric flat sliding window and the electric sunshade louver and the fresh air system make it more intelligent and humanized.



EF100 Thermal Break Unit Facade

-  Thermal Insulation performance **Level 5**
-  Sound Insulation performance **Level 2**
-  Water Tightness performance **Level 4**
-  Air Tightness performance **Level 3**
-  Wind Resistance performance **Level 9**

Horizontal Frame Depth: 185 mm;
Vertical Frame Depth: 185 mm;
Multiple rubber strip sealing to ensure air tightness and heat insulation performance
Water-gas separation, isobaric principle design;
Complete heat insulation structure, with good heat insulation performance;
Industrial production, high assembly precision, easy to ensure product quality;
The unit plates are connected by splicing, and with the strong absorption capacity for temperature deformation, interlayer displacement and seismic deformation;
The unit plates are adopted the structural seal, no need to fill with sealant on site, it will be convenient construction, not affected by weather or climate.



EF120 Unit Facade



Thermal Insulation performance
Level 10



Sound Insulation performance
Level 4



Water Tightness performance
Level 6



Air Tightness performance
Level 3



Wind Resistance performance
Level 9

Horizontal Frame Depth: 221 mm;

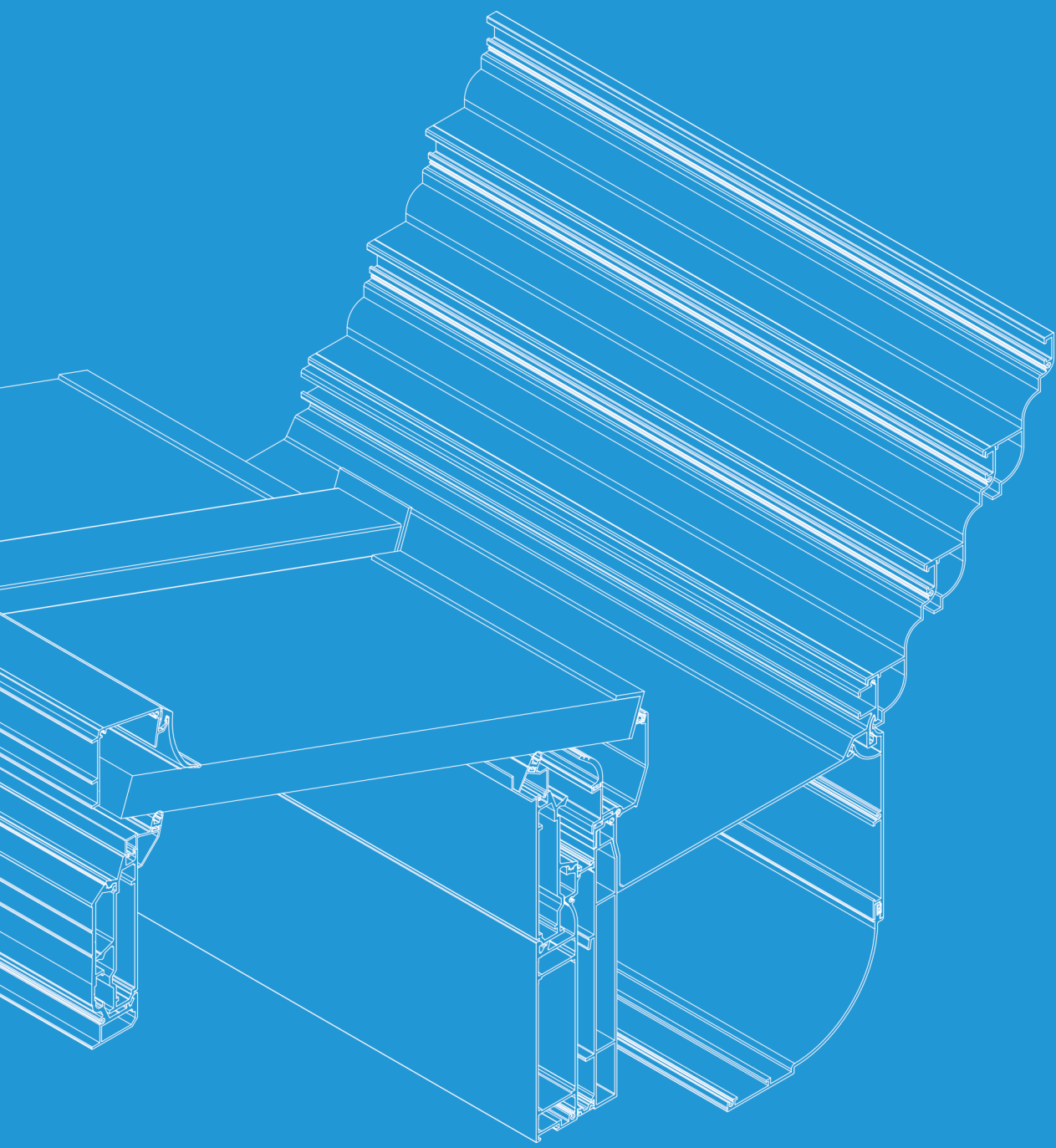
Vertical Frame Depth: 221 mm;

Stepwise drainage design is adopted, with excellent watertight performance;

Industrial production, high assembly precision, easy to ensure product quality;

The unit plates are connected by splicing, and with the strong absorption capacity for temperature deformation, interlayer displacement and seismic deformation;

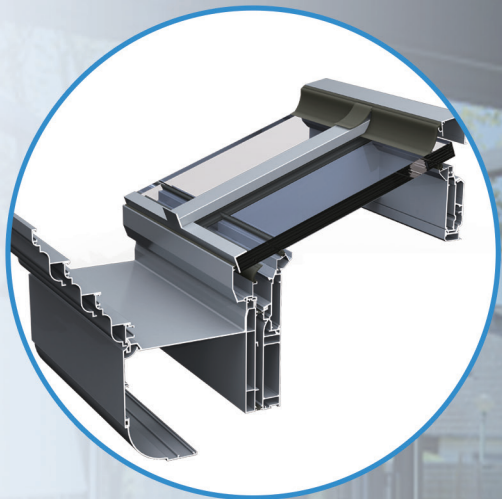
The unit plates are adopted the structural seal, no need to fill with sealant on site, it will be convenient construction, not affected by weather or climate.



Special series

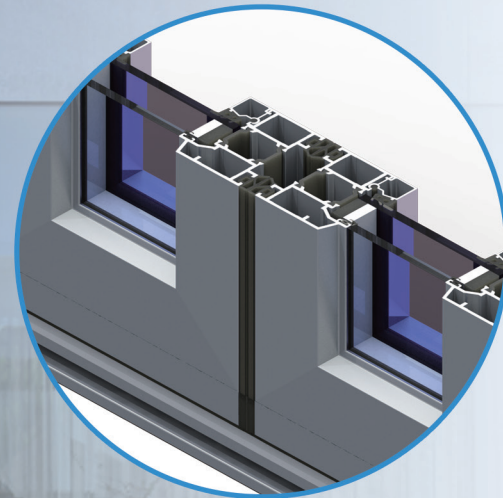
E C 6 0	-----	33
E L 7 0	-----	34
E L 8 6	-----	35
E L 197	-----	36
E M 8 6	-----	37
E S 6 8	-----	38
E S 7 0	-----	39

(Fresh Air System)



EC60 Sunroom

Perfect die system, convenient processing and easy operation;
With CNC equipment, automatic production can be realized;
Multiple rubber strip sealing can ensure the air tightness and heat insulation performance;
Low sawing accuracy, Angle change can be realized (5°- 25°);
Unique connectors reduce assembly difficulty and improve assembly accuracy;
Combined with the window and door system, it realizes the free combination of sunlight room and doors and Windows;
It has the special software support, to be free labor, improving efficiency and shortening the construction period while increasing accuracy.



EL70 folding and sliding door



Thermal Insulation performance
Level 6



Sound Insulation performance
Level 3



Water Tightness performance
Level 6



Air Tightness performance
Level 8



Wind Resistance performance
Level 9

Frame depth: 70 mm, Heat insulation strips: 24 mm

Sash depth: 70 mm, Heat insulation strips: 24 mm

Load-bearing, more stable operation.

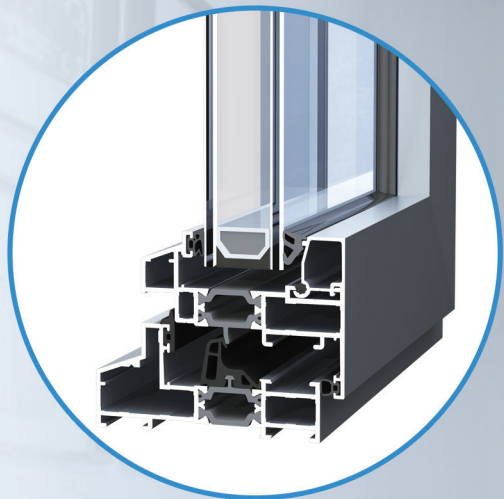
Few types of profiles, simple processing.

Humanized anti-pinch design, safe and reliable.

Sealed with rubber gasket, hidden drainage, excellent performance.

Large opening area, wide view, no indoor space after opening.

It can be used as an inner door or an outer door, and it has a wide range of applications



EL86 Narrow Frame Window



Thermal Insulation performance
Level 7



Sound Insulation performance
Level 3



Water Tightness performance
Level 6



Air Tightness performance
Level 5



Wind Resistance performance
Level 9

Frame depth: 86 mm, Heat insulation strips: 24 mm

Sash depth: 77 mm, Heat insulation strips: 24 mm

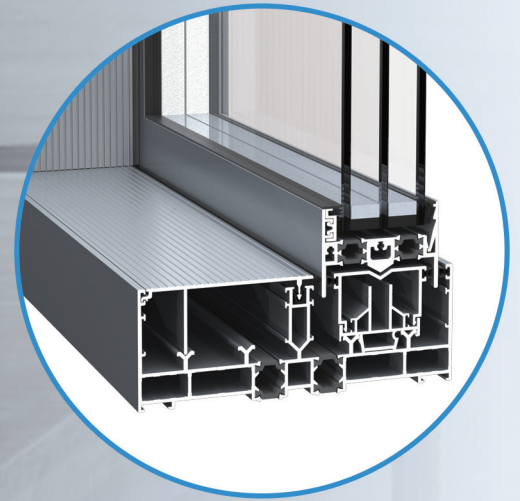
Matching screens to prevent mosquitoes.

Small visible area, transparent vision.

Three-layers sealing design, excellent sealing performance.

Universal corner code for frame fan, convenient for stocking.

Outdoor side simple line design, beautiful and atmospheric, high strength.



ES197 Wide View Door



Thermal Insulation performance
Level 6



Sound Insulation performance
Level 2



Water Tightness performance
Level 3



Air Tightness performance
Level 7



Wind Resistance performance
Level 9

Frame Depth:197mm ;Heat Insulation Strips:18.6mm

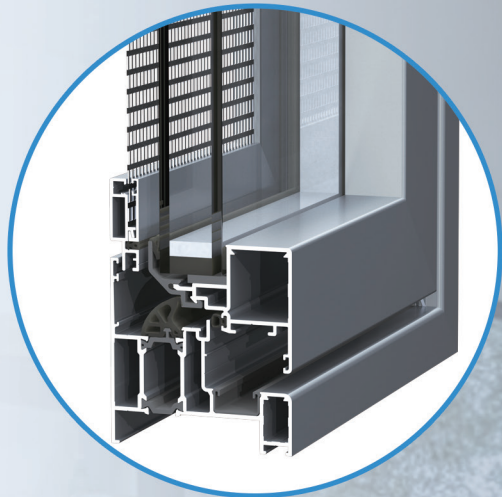
Sash Depth:75mm ;Heat Insulation Strips:34mm

Single leaf load-bearing 600KG,

Barrier-free access at the threshold.

Panoramic view effect is more transparent.

Excellent heat preservation, airtight and watertight performance.



EM86 Tilt and Sliding window



Thermal Insulation performance
Level 5



Sound Insulation performance
Level 3



Water Tightness performance
Level 5



Air Tightness performance
Level 7



Wind Resistance performance
Level 9

Frame Depth:86mm, Heat insulation strips:20 mm

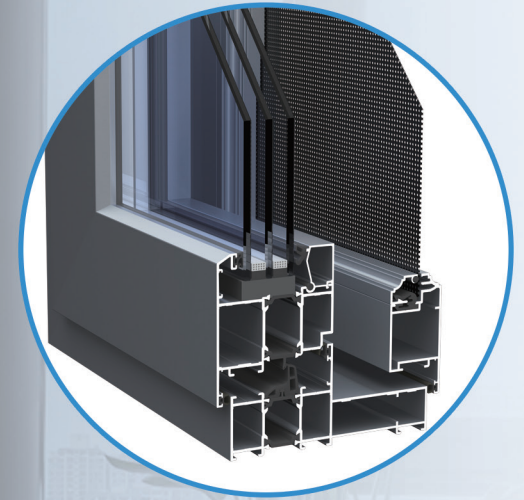
Sash Depth:56mm

Excellent heat preservation, airtight and watertight performance,

Three-way sealing, with a sealing structure system with casement windows.

Inverted ventilation, push-pull opening mode, saving indoor space.

Matching one-piece screen window, neat indoor and outdoor, beautiful, concise and atmospheric.



ES68 integrated window and screen



Thermal Insulation performance
Level 6



Sound Insulation performance
Level 3



Water Tightness performance
Level 6



Air Tightness performance
Level 8



Wind Resistance performance
Level 9

Frame Depth: 135mm, Heat insulation strips: 24 mm

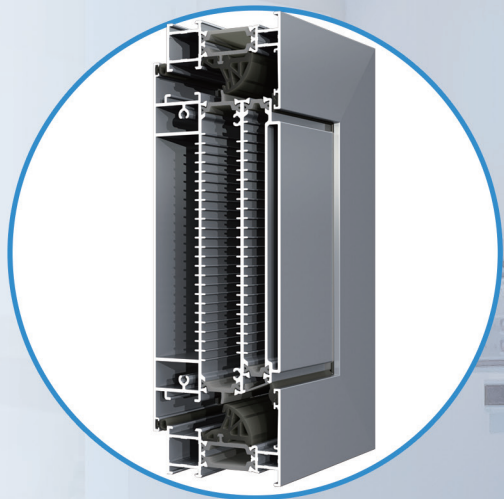
Sash Depth: 77mm, Heat insulation strips: 24 mm

The screen window is opened inside and the window sash is opened outside.

European standard notch design, suitable for a variety of hardware.

Three-layers sealing design, excellent sealing performance.

Equipped with HOPO outer opening and awning hardware, it can realize outward opening and awning.



ES70 Fresh Air Window



Thermal Insulation performance
Level 7



Sound Insulation performance
Level 3



Water Tightness performance
Level 6



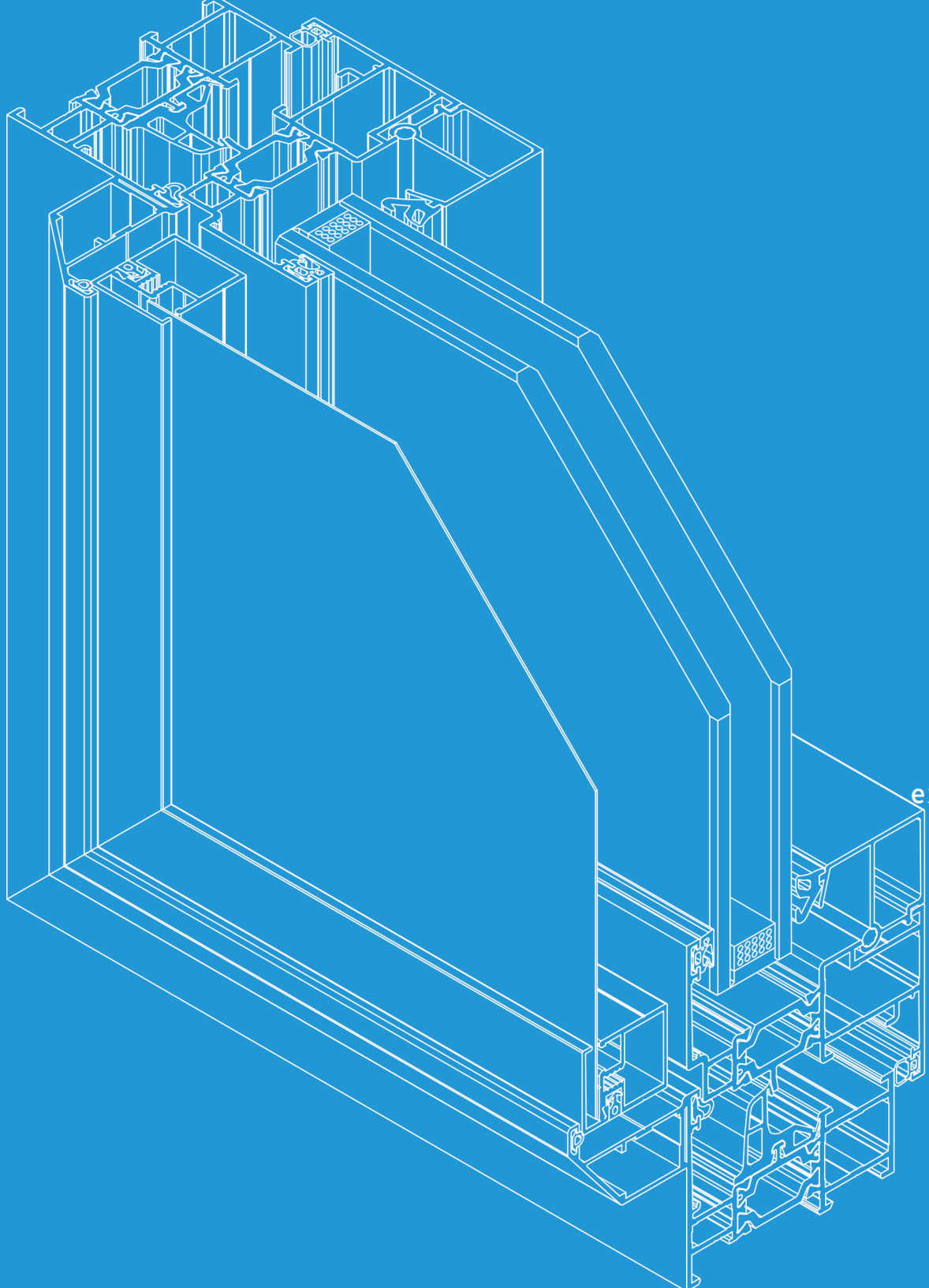
Air Tightness performance
Level 5



Wind Resistance performance
Level 9

Frame Depth: 70mm, Heat insulation strips: 33 mm
Sash Depth: 80.5mm, Heat insulation strips: 15/24 mm
With heat recovery function, energy saving and environmental protection;
Voice input, WIFI intelligent connection to realize remote control.
Equipped with a fresh air system to purify the air and the filter element is
easy to disassemble and replace.
Always monitor indoor air quality, multi-color screen display, automatic
adjustment of fan speed.
Ventilation can be achieved without opening the window, blocking the
intrusion of noise, mosquitoes, and pollutants.





Matching products

window screening

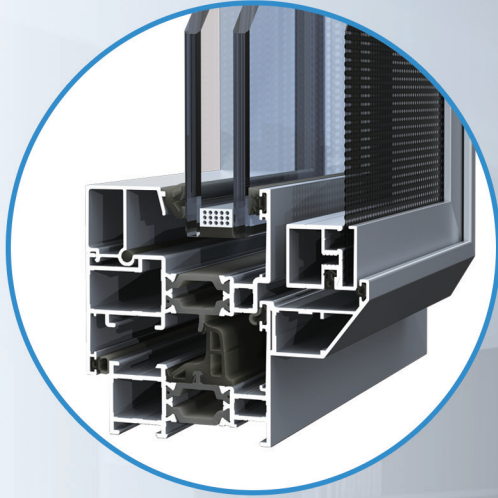
Simple/Classic 41

Fixed/sliding 42

Integrated/
external suspension 43

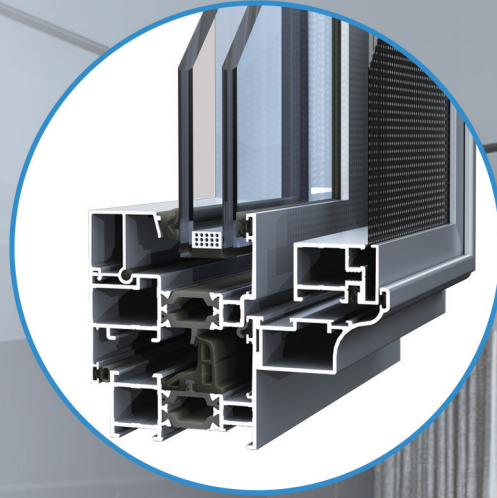
Door screening

Casement/sliding 44



Simple screen

Structure Depth: 35mm
Minimum visible area: 45mm
Simple style, stylish and beautiful
Can be assembled with anti-theft mesh
Convenient disassembly and assembly,
convenient maintenance
Open inward, safe and reliable
Commonly used in all inner open
window series



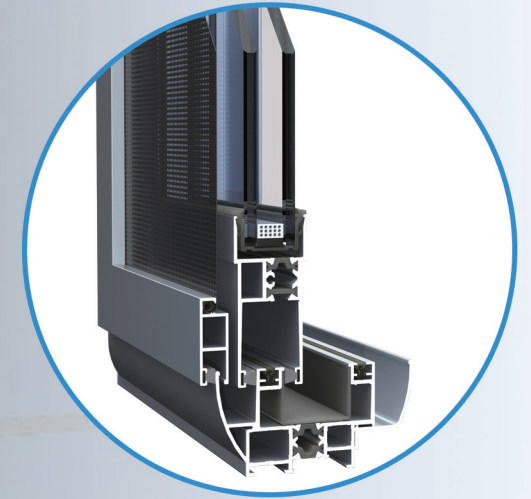
Classical screens

Classical screens
Structure width: 51.5mm
Minimum visible area: 47.7mm
Classical style, elegant and beautiful
Can be assembled with anti-theft mesh
Convenient disassembly and assembly,
convenient maintenance
Open inward, safe and reliable
Commonly used in all inner open
window series



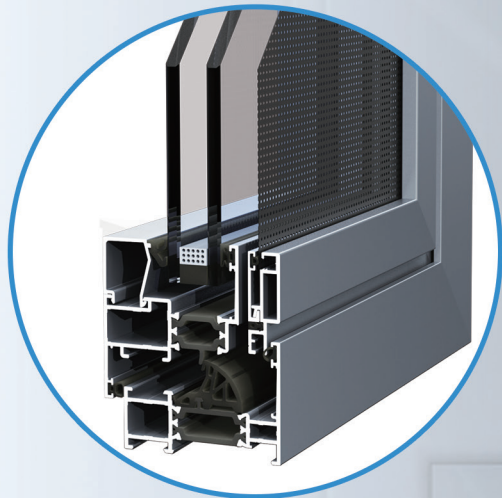
Fixed screen

Structure Depth: 22mm
Minimum visible area: 22mm
Easy to install and disassemble, easy to maintain
Simple processing and low cost
Commonly used in all inner open window series



Sliding Screen

Structure Depth: 38.5mm
Minimum visible area: 38.5mm
Flexible opening and closing, saving space



Integrated window screen

Structure Depth: 41.5mm

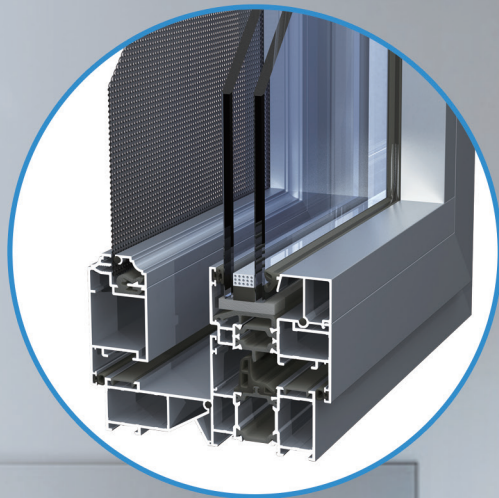
The screen window is flush with the outer frame, simple and beautiful

Can be assembled with anti-theft mesh

Convenient disassembly and assembly,

convenient maintenance

Open inward, safe and reliable



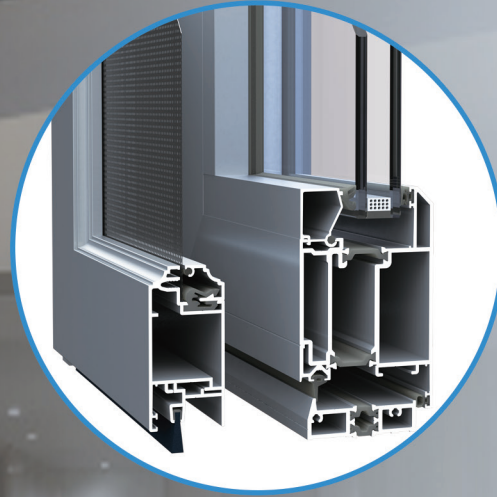
external suspension screen

Structure Depth: 65mm

Minimum visible area: 102mm

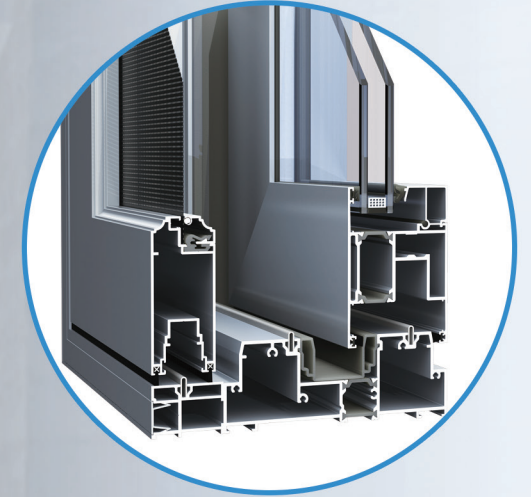
European standard notch, strong hardware adaptability

Plug-in installation, wide applicability



Casement door screen

Structure Depth: 65mm
Minimum visible area: 92.2mm
European standard notch, strong hardware
adaptability
No threshold design, barrier-free access



Sliding door screen

Structure Depth: 45mm
Minimum visible area: 133.5mm
Sliding open without taking up space
Low threshold design, easy to pass